



**RM<sup>™</sup> Measiteach<sup>™</sup>**  
NEXT GENERATION

Network Installation Guide

Version 1.5.0

## Contents

Main Application .....	3
Prerequisites .....	3
Application Installation and Configuration .....	4
MSI Location .....	4
Optional Configuration .....	4
Asset Pack / Widgets .....	5
Manual Network Installation .....	5
Text to Speech (TTS) Voices .....	6
Installation and Configuration .....	6
MSI Location .....	6
Optional Configuration .....	6
Technical requirements .....	7
Support .....	8

## Main Application

### Prerequisites

RM Easiteach Next Generation has several prerequisites. If the application is installed via a network, these prerequisites will not be installed automatically, so a manual installation is required.

All of the prerequisites are included on the RM Easiteach installation media and are contained within sub-directories of the **Easiteach Next Generation\ISSetupPrerequisites** folder. The following table lists the required pre-requisites and the corresponding sub-directory:

Pre-requisite	Sub-directory
Adobe Flash 11	{2D7B1A1F-8DFE-4C5C-B297-4A95FDDF1DAE}
Microsoft Visual C++ Runtime	{B29C61CB-BF4C-4D17-82A6-490CB31E9707}
Microsoft .Net Framework 4.0 Client Profile	{BDC3065E-A9B8-4D16-8D44-CA44E7CB66D8}
K-Lite Codec Pack Basic	{FD0D1758-D6BB-442A-8D20-E1F07A471BD9}

## Application Installation and Configuration

### MSI Location

RM Easiteach Next Generation is compatible with network installations using the **Easiteach Next Generation MSI**, which is contained within the **Easiteach Next Generation** folder on the installation media.

*Please note: The MSI is reliant on the other files contained within the **Easiteach Next Generation** folder. When copying the MSI elsewhere, please ensure the entire contents of the folder, including all sub-directories, are copied along with it or the installation will fail.*

### Optional Configuration

For network installations Easiteach supports an optional configuration file for providing initial application settings, redirection of resources to a network share, and for registering the product. The following options are available:

- Settings:
  - ResourcesPath – This provides an alternate location for the media bank(s) and widget library. For more information please see section 2, Asset Pack / Widgets within this guide. A valid path is a directory path or UNC network share.
  - AspectRatio – This is the default aspect ratio which can be overridden within the Document settings tab, in My easiteach. The valid options are 4:3, 16:9, 16:10 and A4.
  - EnableUpdateCheck – This enables or disables the automatic update check and notification. It may be preferable to disable the update check if updates are to be handled by the network installation. The valid options are true or false.
  - DownloadCentreLocale – This sets the default region that the download centre searches for Easiteach content. Currently 39 languages are supported by the download centre.
  
- Registration:
  - Serial – This is the serial number with which to automatically register the product.

The configuration file should be named **config.xml** and be placed in the same directory as the installation MSI. The structure of the configuration file is as follows:

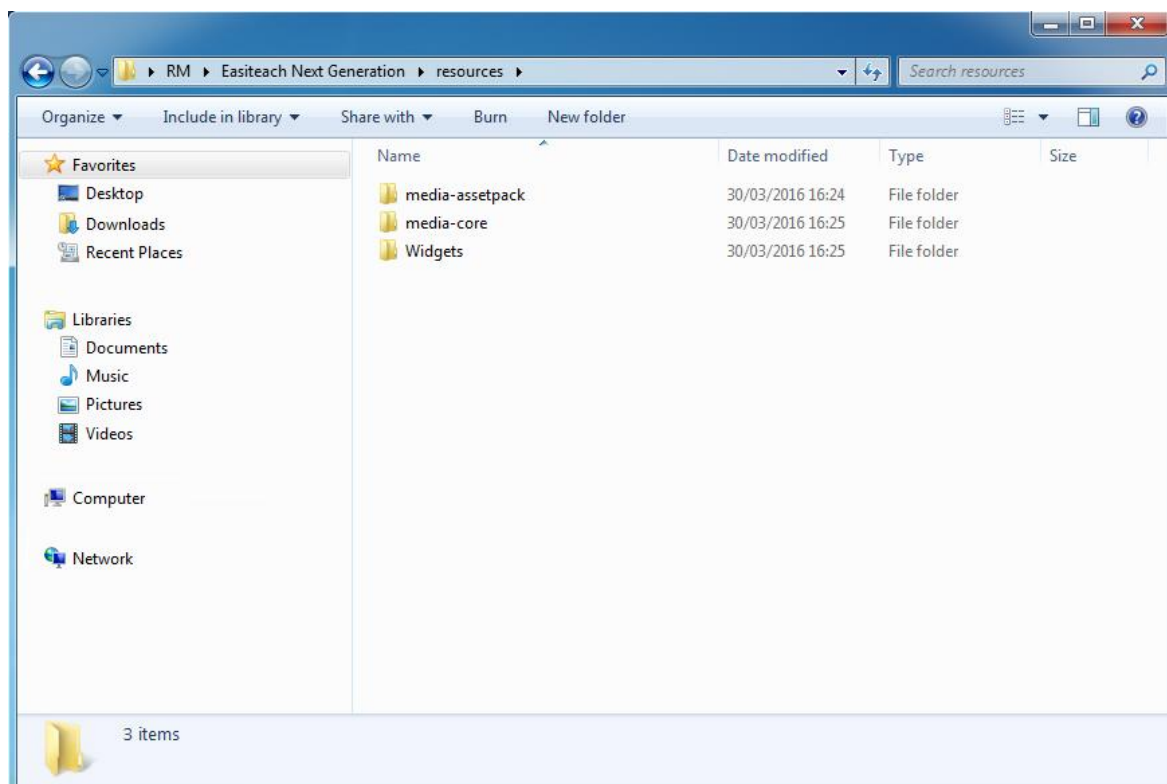
```
<Configuration Product="EasiteachNextGeneration">
  <Settings ResourcesPath="\\server\share"
    AspectRatio="4:3"
    EnableUpdateCheck="false"
    DownloadCentreLocale="global" />
  <Registration Serial="12345-12345-12345-12345" />
</Configuration>
```

## Asset Pack / Widgets

### Manual Network Installation

For network installations it is possible for multiple users to share a single copy of the Asset Pack and Widget libraries. The setup of this configuration requires the following manual steps:

1. Install Easiteach onto a client computer, along with the content pack(s).
2. Create a file share to host the Asset Pack e.g. \\server\resources
3. Copy the contents of <program files>\RM\Easiteach Next Generation\resources into the file share. For reference, the contents of the share should look similar to the screenshot below:



4. Add the path to the share to the main application **config.xml**. For more information on this step please see the Optional Configuration section within this guide.

## Text to Speech (TTS) Voices

### Installation and Configuration

#### MSI Location

The Text to Speech Voices installer is compatible with network installations using the **Easiteach text to speech voices** MSI, which is contained within the **Content\Voices Installer** folder on the installation media.

*Please note: The MSI is reliant on the other files contained within the **Voices Installer** folder. When copying the MSI elsewhere, please ensure the entire contents of the folder, including all subdirectories, are copied along with it or the installation will fail.*

#### Optional Configuration

By default the Text to Speech Voices installer will install the voice that corresponds to the computer's regional settings (if available) but up to two voices can be installed. If the default configuration is not satisfactory it is possible to customise which voices are installed using a configuration file.

The configuration file should be named **config.xml** and be placed in the same directory as the installation MSI. The structure of the configuration file is as follows:

```
<Configuration Product="EasiteachNextGenerationVoices">
  <InstallVoice Name="British"/>
  <InstallVoice Name="Dutch"/>
</Configuration>
```

Each 'InstallVoice' entry will install the given voice, with the Name attribute corresponding to one of the following available voices:

"ArabicHD"	"Polish"
"Brazilian"	"Portuguese"
"British"	"Russian"
"Catalan"	"Spanish"
"Czech"	"Swedish"
"Danish"	"Turkish"
"Dutch"	"USEnglish_Tracy"
"French"	"USEnglish_Ryan"
"German"	"USSpanish"
"Greek"	
"Italian"	

## Technical requirements

The minimum and suggested hardware and software required to use RM Easiteach is:

	Minimum	Recommended
<b>Operating system</b>	<b>Windows:</b> Standalone computers using Windows® 7 SP1 (32 or 64 Bit)	<b>Windows:</b> Standalone computers using Windows® 7 SP1 (32 or 64 Bit) or Windows® 8.1 with Update (32 or 64 Bit)
<b>Processor</b>	<b>Windows: 1.8GHz+</b>	<b>Windows: 2.5GHz+</b>
<b>Memory</b>	<b>2 GB or above</b>	<b>4 GB or above</b>
<b>Storage</b>	<b>5 GB or above</b>	<b>10 GB or above</b>
<b>Graphics card</b>	<b>128 MB</b>	<b>512 MB</b>

### The following prerequisites are required for Windows®:

Microsoft® .Net Framework 4 Client Profile (minimum), Microsoft® .NET Framework 4.6.1 (recommended)

Microsoft® Visual C++ 2010 Redistributable (version 10.0.40219.01)

Adobe® Flash Player v11.2 (or above) for non-Internet Explorer® browsers

K-Lite codec pack basic (version 9.1.0)

## Support

If you require support using RM Easiteach Next Generation, look through this guide to see if it provides an answer to your query. This guide can also be accessed from the 'e' menu, by selecting the 'Help' option. For further help and technical support, you can visit the RM Easiteach website or contact Support.

To get online help, visit [www.easiteach.com/support](http://www.easiteach.com/support). The website provides information in a variety of languages.

### UK support

Telephone support is available on 0845 404 0000 between 8:00 am and 6:00 pm Monday to Friday. Alternatively, visit [www.rm.com/support](http://www.rm.com/support), where you can search the knowledge library or log a support call.

### Non-UK support

For some areas, we have in-country support arrangements. Please visit [www.easiteach.com/support](http://www.easiteach.com/support) for details.

Alternatively, contact the company that supplied RM Easiteach.

RM Easiteach is a trademark of RM Education Ltd in the UK.

Copyright © RM Education Ltd 2016. All rights reserved.